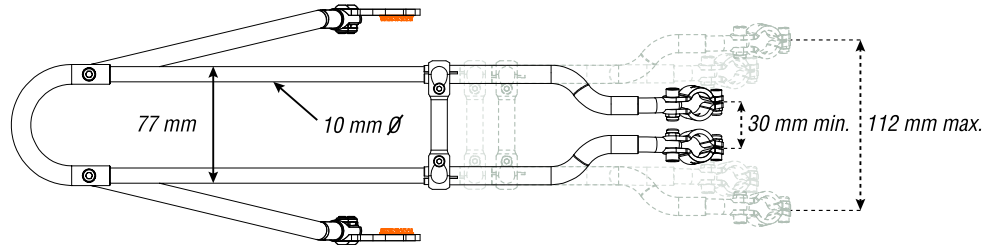
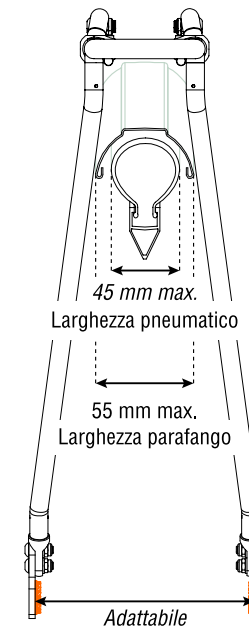
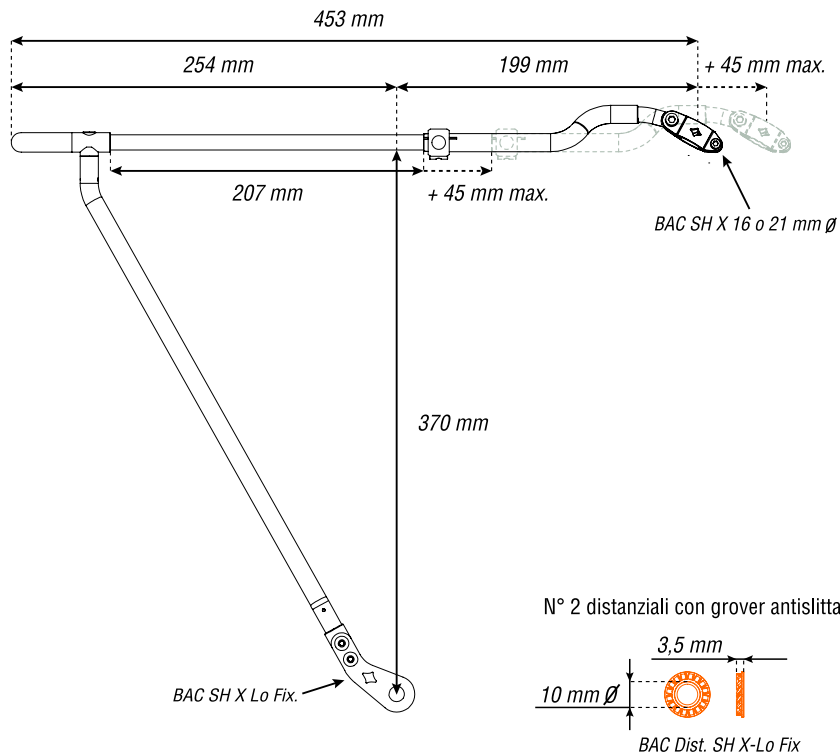


## Rack-RH + kit per mozzo con dadi

Dimensioni del portapacchi (posteriore)



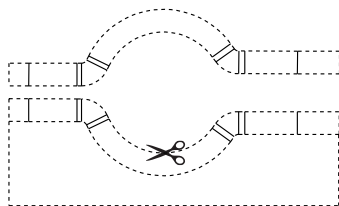
**Acciaio inox e alluminio**  
**Per ruota 26" - 28"**  
**Portata 20 kg**  
**Peso 538 g**



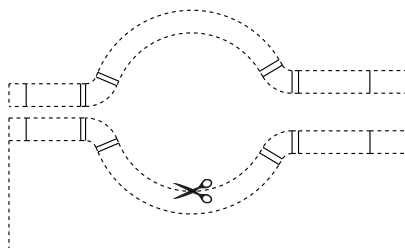
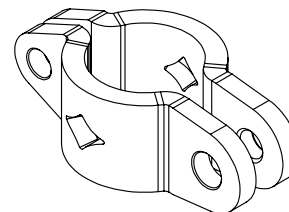
Le dimensioni (in mm) per il parafango e per il pneumatico si riferiscono a comuni bici da trekking e sono valori indicativi.

## Rack-RH + kit braccialetto - mozzo con dadi

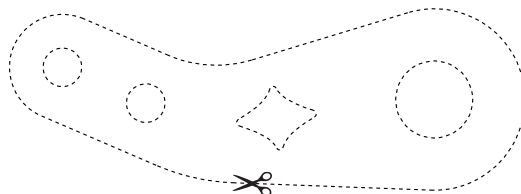
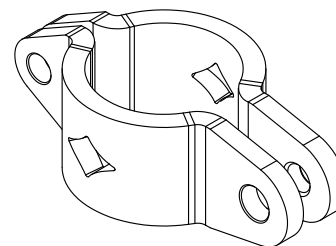
Dimensioni delle staffe



*BAC SH X 16 mm Ø*



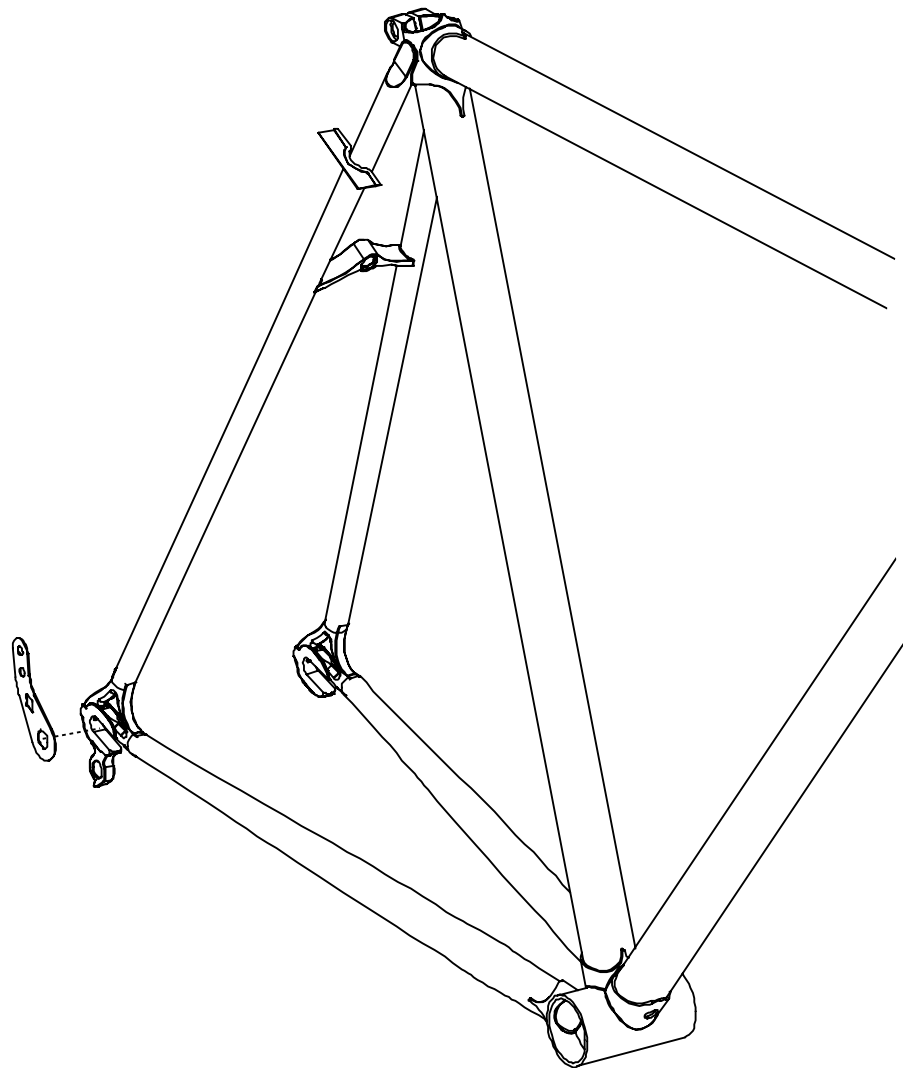
*BAC SH X 21 mm Ø*



*BAC SH X Lo Fix.*

## Rack-RH + kit per mozzo con dadi

Dimensioni delle staffe



*Verifica, con le sagome in carta ritagliate, la compatibilità tra il vostro telaio e le specifiche staffe BAC.*