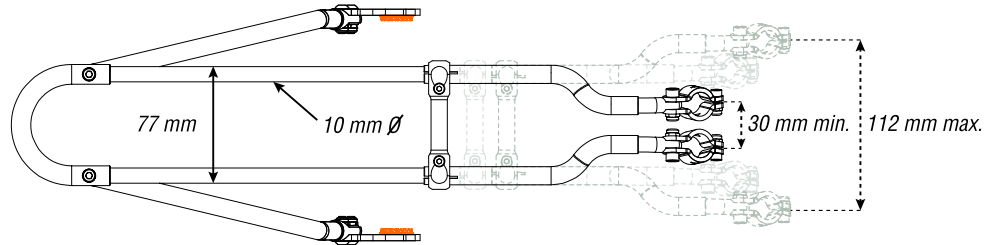
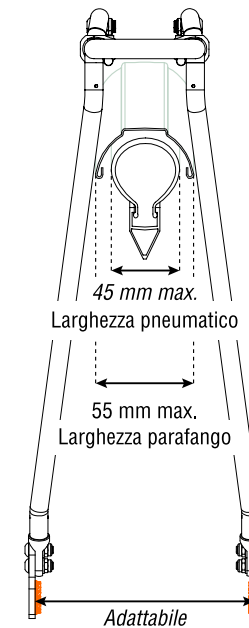
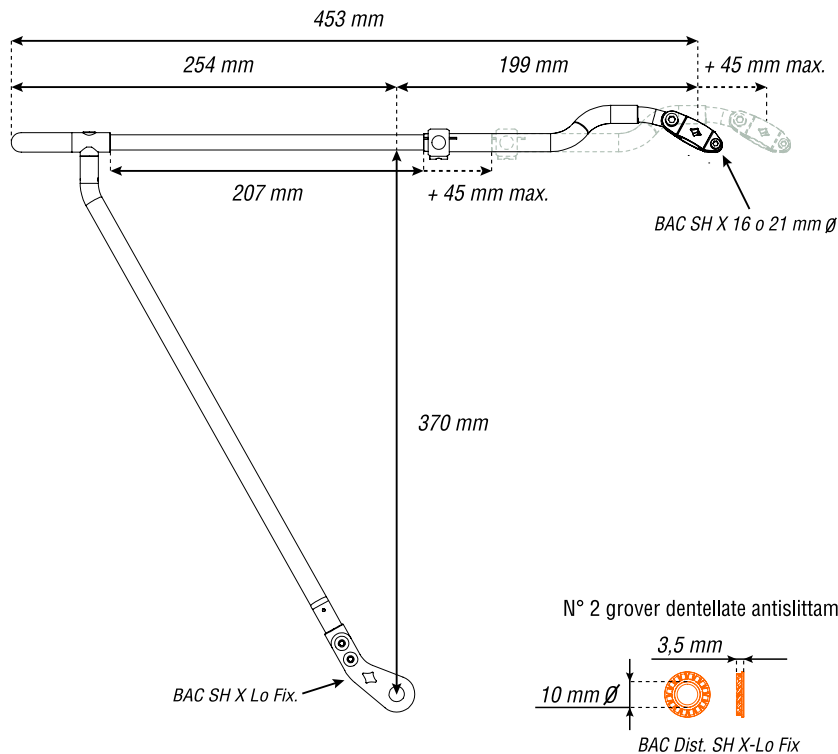


Rack-RH + kit per mozzo con dadi

Dimensioni del portapacchi (posteriore)



Acciaio inox e alluminio
Per ruota 26" - 28"
Portata 20 kg
Peso 538 g

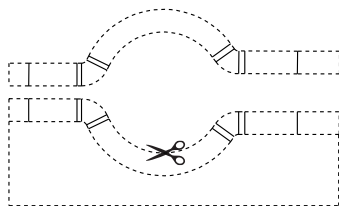


Le dimensioni (in mm) per il parafango e per il pneumatico si riferiscono a comuni bici da trekking e sono valori indicativi.

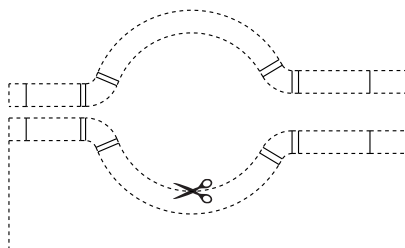
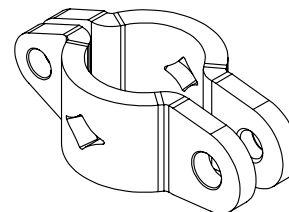
Nota: frapporre le grover dentellate disegnate in arancione tra le staffe del portapacchi e i forcellini del telaio.

Rack-RH + kit braccialeto - mozzo con dadi

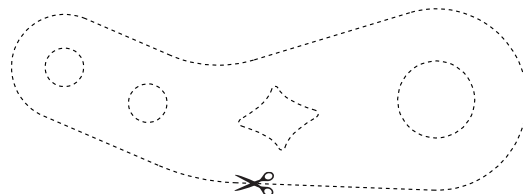
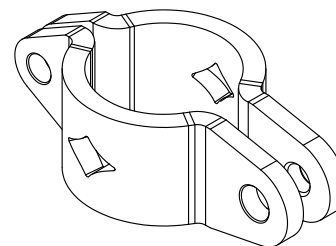
Dimensioni delle staffe



BAC SH X 16 mm Ø



BAC SH X 21 mm Ø



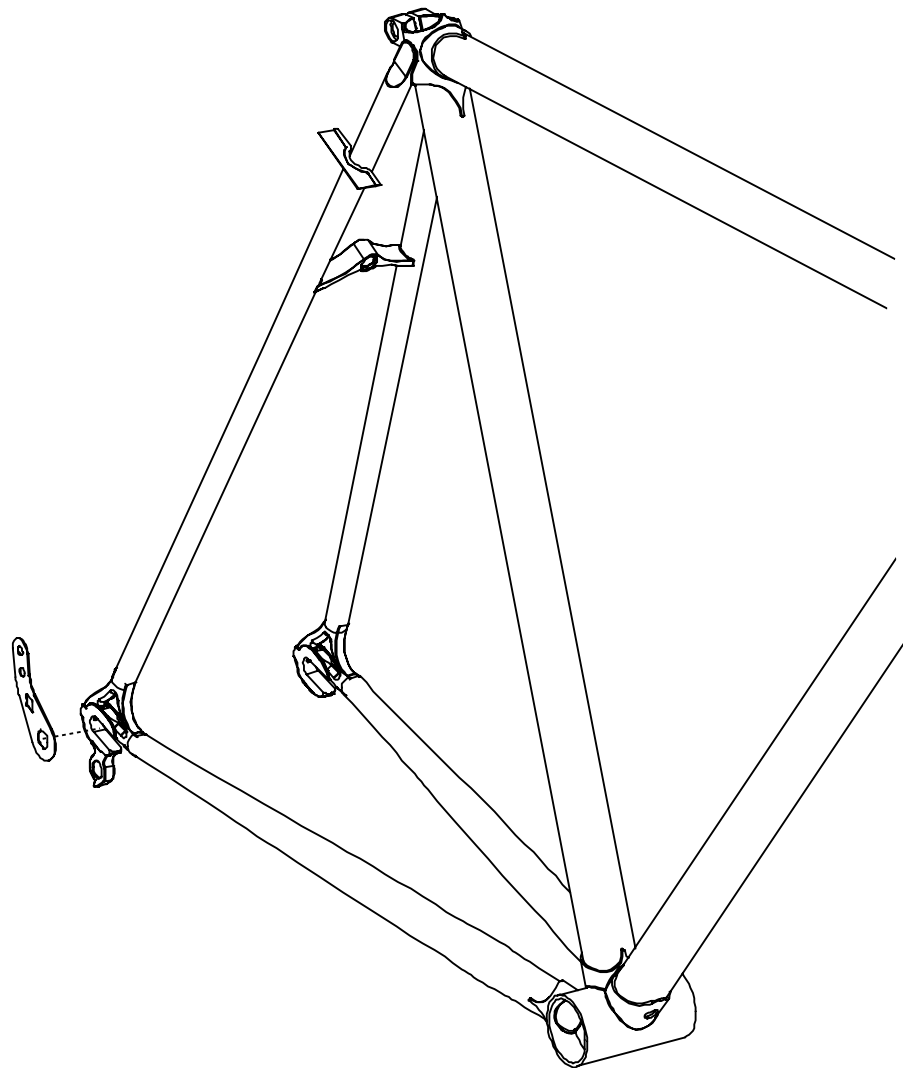
BAC SH X Lo Fix.

Scala 1:1

0 1 2 cm

Rack-RH + kit per mozzo con dadi

Dimensioni delle staffe



Verifica, con le sagome in carta ritagliate, la compatibilità tra il vostro telaio e le specifiche staffe BAC.