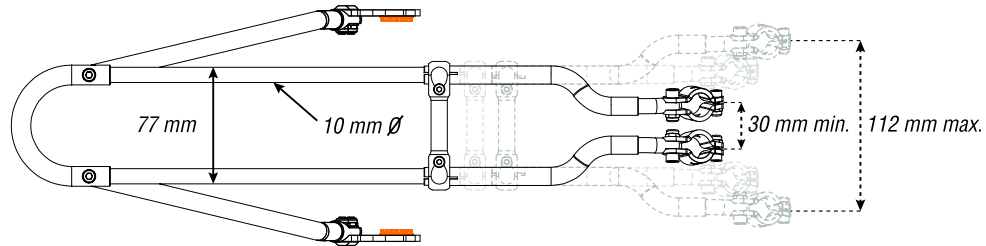
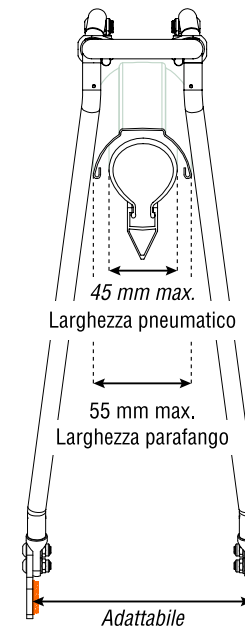
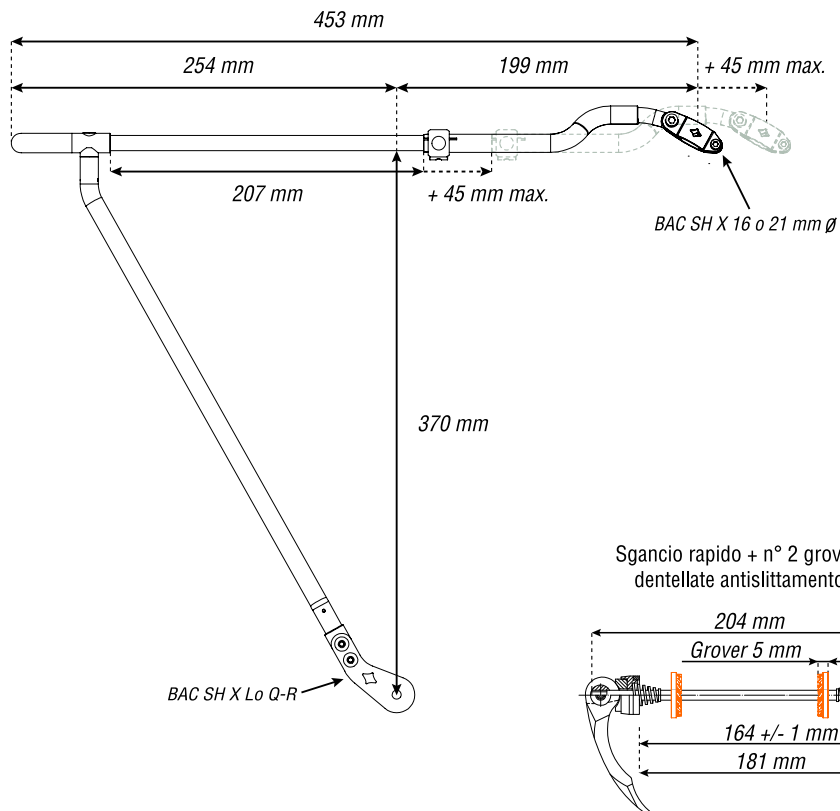


## Rack-RH + kit sgancio rapido

Dimensioni del portapacchi (posteriore)



**Acciaio inox e alluminio**  
**Per ruota 26" - 28"**  
**Portata 20 kg**  
**Peso 538 g**

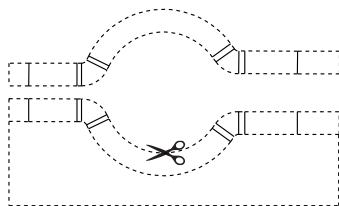


Le dimensioni (in mm) per il parafango e per il pneumatico si riferiscono a comuni bici da trekking e sono valori indicativi.

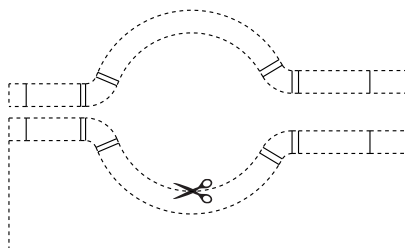
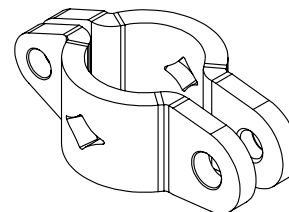
Nota: frapporre le grover dentellate disegnate in arancione tra le staffe del portapacchi e i forcellini del telaio.

## Rack-RH + kit braccialetto - sgancio rapido

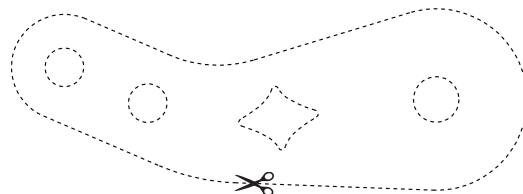
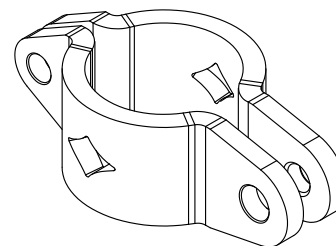
Dimensioni delle staffe



*BAC SH X 16 mm Ø*



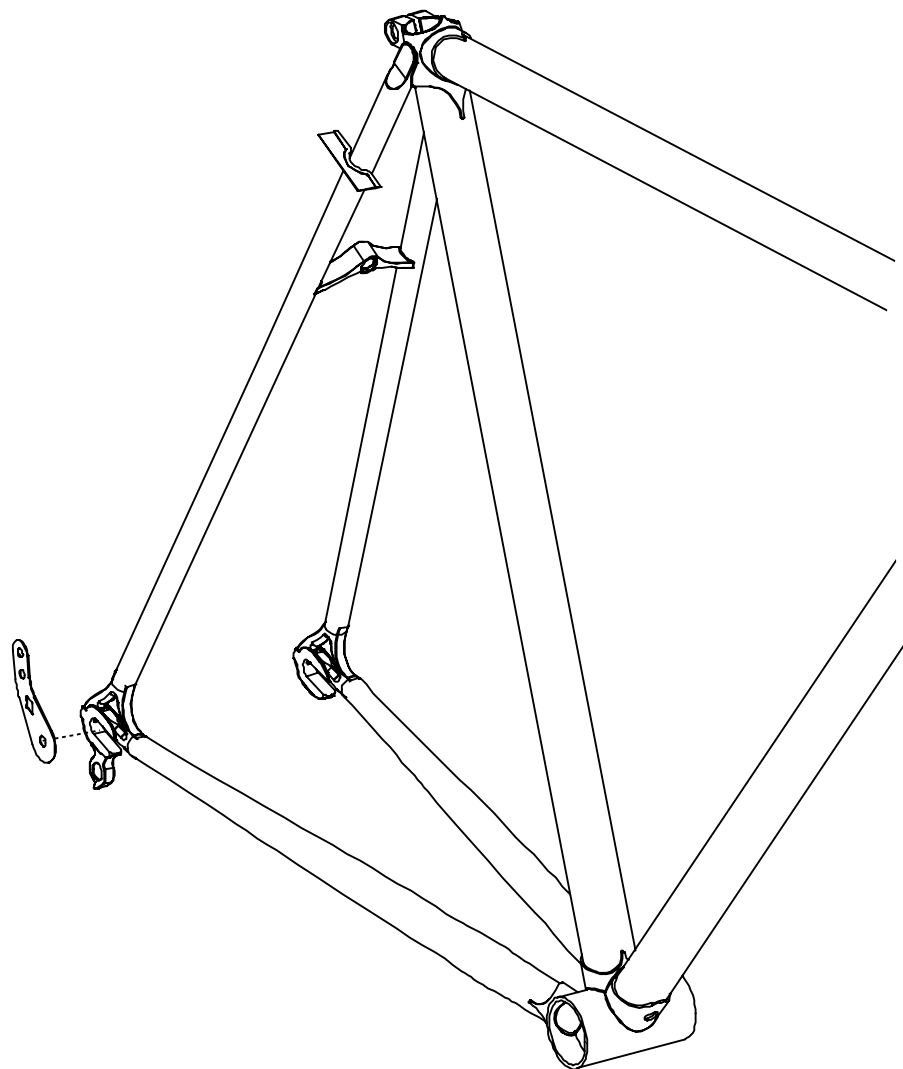
*BAC SH X 21 mm Ø*



*BAC SH X Lo Q-R*

## Rack-RH + kit sgancio rapido

Dimensioni delle staffe



*Verifica, con le sagome in carta ritagliate, la compatibilità tra il vostro telaio e le specifiche staffe BAC.*